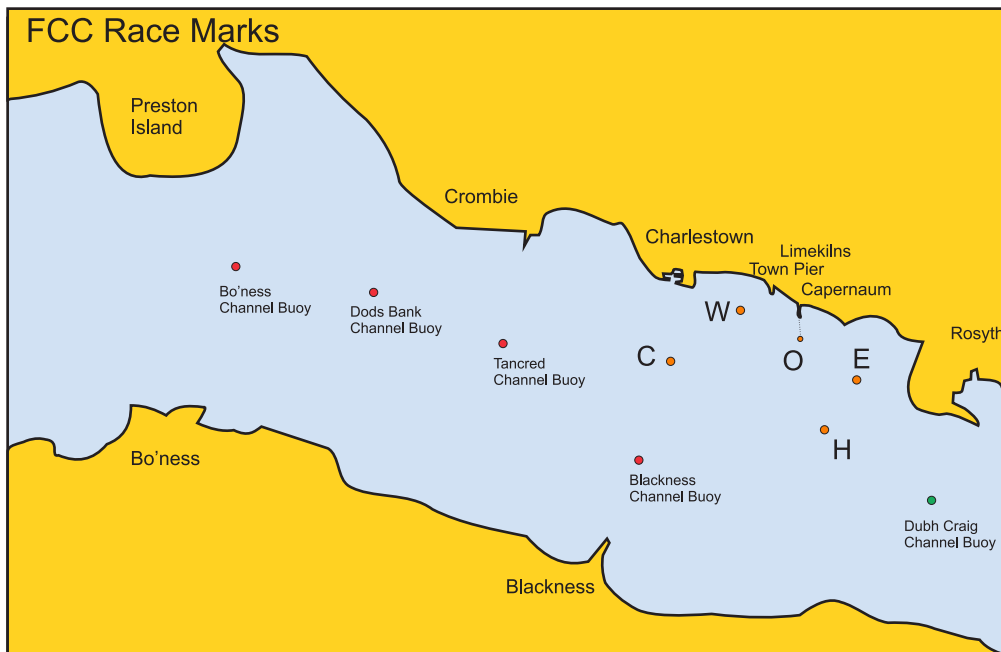


# Fife Regatta 2017 - Appendix A



Mark	Description	Approximate Position
O	Start Outer	
E	Orange FCC Buoy	56° 01.626N 003° 28.283W
W	Orange FCC Buoy	56° 01.923N 003° 29.507W
C	Orange FCC Buoy	56° 01.592N 003° 29.886W
H	Orange FCC Buoy	56° 01.283N 003° 28.605W
Dhu Craig	Starboard Hand Channel Mark	56° 00.840N 003° 27.243W
Blackness	Port Hand Channel Mark	56° 01.064N 003° 30.314W
Tankred	Port Hand Channel Mark	56° 01.580N 003° 31.915W
Dods Bank	Port Hand Channel Mark	56° 02.024N 003° 34.071W
Bo'Ness	Port Hand Channel Mark	56° 02.222N 003° 35.205W

**Courses:** Courses will be displayed with a letter and number in the starters hut window.  
 A number displayed in front of the letter indicates the number of times the course should be sailed.  
 e.g. E1 would be once round course E1 but 2E1 would be twice round course E1

O is start line outer mark

Direction of rounding: leave marks in **GREEN** to starboard, in **RED** to port

## EAST WIND

- E1 E\_H\_W\_O\_E\_W\_O\_E\_H\_W\_O
- E2 E\_H\_W\_O\_Blackness\_C\_O\_E\_H\_W\_O
- E3 Dhu Craig\_Tankred\_O\_E\_H\_W\_O
- E4 E\_Blackness\_W\_O\_E\_H\_W\_O\_E\_H\_W\_O
- E5 E\_H\_W\_O\_E\_C\_W\_O
- E6 E\_C\_H\_W\_O\_E\_C\_H\_W\_O\_H\_W\_O
- E7 E\_C\_O\_E\_H\_O\_E\_H\_W\_O
- E8 E\_H\_Blackness\_Bo'ness\_W\_O
- E9 E\_H\_Blackness\_Dods Bank\_W\_O
- E10 E\_H\_Blackness\_Tankred\_W\_O

## WEST WIND

- W1 Tankred\_H\_E\_O\_C\_H\_O\_W\_H\_E\_O
- W2 C\_E\_O\_C\_H\_O\_W\_H\_E\_O
- W3 C\_H\_E\_O\_C\_H\_O\_W\_H\_O
- W4 C\_W\_H\_O\_C\_E\_O\_H\_E\_O
- W5 C\_Blackness\_E\_O\_C\_H\_E\_O\_W\_H\_O
- W6 C\_H\_O\_C\_H\_O\_W\_H\_E\_O
- W7 W\_H\_E\_O\_W\_H\_O\_W\_H\_E\_O
- W8 W\_Bo'ness\_Blackness\_H\_E\_O
- W9 W\_Dods Bank\_Blackness\_H\_E\_O