



Forth Yacht Clubs Association



# East Coast Sailing Festival

Incorporating



## Scottish Mortgage Investment Trust Scottish Dragon Championships



Scottish  
Canals

**Granton Harbour,  
2<sup>nd</sup> – 4<sup>th</sup> September 2017**

# Urban Union East Coast Sailing Festival

## Incorporating

### Scottish Mortgage Investment Trust

### Scottish Dragon Championships

## 2<sup>nd</sup> – 4<sup>th</sup> September 2017

### SAILING INSTRUCTIONS

*The notation '[DP]' in a rule in the Sailing Instructions means that the penalty for a breach of that rule may, at the discretion of the protest committee, be less than disqualification.*

#### 1 Organising Authority

The Organising Authority for the Regatta will be the Forth Yacht Club Association (FYCA).

#### 2 Rules

The Regatta will be governed by the rules as defined in the current edition of *The Racing Rules of Sailing*.

#### 3 Notices to Competitors

Notices to competitors will be posted on the official notice board located at the Regatta Office which is the Mickery office in the Royal Forth Yacht Club (RFYC) courtyard.

A competitor briefing will take place in the RFYC clubhouse at 08:30 on Saturday 2<sup>nd</sup> September.

#### 4 Changes to Sailing Instructions

Any change to the sailing instructions will be posted before 08:30 on the day it will take effect, except that any change to the schedule of races will be posted by 20:00 on the day before it will take effect.

#### 5 Signals Made Ashore and Afloat

5.1 Signals made ashore will be displayed at the flagpole in the RFYC courtyard.

When flag AP is displayed ashore, '1 minute' is replaced with 'not less than 60 minutes'. This changes RRS rule L4.2.

5.2 Signals may be made afloat from any committee boat. For race management matters the committee boat will be using **VHF CH77 (M2)**.

#### 6 Classes

6.1 The Classes and Class flags (unless described otherwise in the Appendices) are as follows:

Class	Flag	*
Class 1 Handicap 939	Numeral 1	* <i>Examples of Class 4 (Sports Boats / Day Boats) include Squibs, H Boats, 707s, RS Elites, SB20s and VX One. The Race Committee may offer additional class starts if five or more boats in the same class have entered the Regatta by 22:00 on Thursday 31<sup>st</sup> August</i>
Class 2 Handicap 940 – 1040	Numeral 2	
Class 3 Scottish Dragon Championships	Numeral 3	
Class 4 Sportsboats / Dayboats*	Numeral 4	

Class	Flag	<ul style="list-style-type: none"> <li>There will one start for Class 5 and one for Class 6, but separate results and prizes for a &amp; b fleets.</li> </ul>
Class 5a Cruiser / Racer Handicap 920 – 1040	Numeral 5	
Class 5b Cruiser / Racer Handicap 920 – 1040 Restricted (White) Sail		
Class 6a Cruiser / Racer Handicap 1041	Numeral 6	
Class 6b Cruiser / Racer Handicap 1041 Restricted (White) Sail		

- 6.2 Depending on the number of entries received in each class, the race committee reserves the right to cancel, combine, divide or otherwise alter the classes at its discretion. Such a change will be posted as an alteration to sailing instructions.

## 7 Schedule of Races

Date	Class	Race	Scheduled warning signal for first race
Friday	All Classes	Feeder Race from Port Edgar (optional)	1900
Saturday	5 & 6	Passage race to Burntisland	1000
	1,2,3,4	3 "Round the Cans" races off Granton	1030
	5 & 6	Burntisland return passage race	1430
Sunday	1,2,3,4	3 "Round the Cans" races off Granton	1100
	5 & 6	2 Passage races off Granton (Kelpie Cup)	1100
	All Classes	Passage race to Port Edgar (optional)	1830
Monday	3	3 "Round the Cans" races for the Scottish Dragon Championships	1100

- 7.1 On each day, the second and subsequent races will be started as soon as practicable after the preceding race has finished.

## 8 Handicaps

- 8.1 Race results shall be calculated using the RYA Portsmouth Yardstick (PY) system. The PY Ratings allocated by the FYCA will be used. A boat entering the Regatta without a handicap rating may be allocated one by the Race Committee.
- 8.2 Boats may apply for a "Restricted Sail" handicap allowance, if notice is provided to the race committee before the Friday evening. In this case, boats are not permitted to use spinnakers or cruising chutes and may only set one headsail at any time. A "boomed-out" headsail is permitted.

## 9 Racing Area

- 9.1 The charts in Appendix A show the racing area.

## 10 The Courses

- 10.1 Prior to the warning signal the Committee Boat will display a number/letter to indicate the course to be sailed.
- 10.2 The Friday Feeder race course is shown in SI Appendix B
- 10.3 The Saturday Burntisland passage race course and the Burntisland return passage race course are shown in SI Appendix C
- 10.4 The option of Windward/Leeward courses is shown in SI Appendix D.
- 10.5 The option of triangular courses is shown in SI Appendix D.
- 10.6 The option of Trapezoid courses is shown in SI Appendix E.
- 10.7 The Kelpie Cup passage race courses for classes 5 & 6 are shown in SI Appendix F.
- 10.8 The Sunday passage race to Port Edgar course is shown in SI Appendix G.

**11 Marks**

- 11.1 The marks for Windward/Leeward courses are described in SI Appendix D.
- 11.2 The marks for triangular courses are described in SI Appendix D.
- 11.3 The marks for Trapezoid courses are shown in Appendix E.

**12 The Start**

- 12.1 To alert boats that a race or sequence of races will begin soon, an orange flag will be displayed with a sound signal not less than five minutes before the first warning signal of a start or series of starts is displayed. This signal may not be made on Friday's feeder race or the Burntisland passage races.
- 12.2 The starting line for each course is given in the appropriate Appendix to these Sailing Instructions.
- 12.3 Boats whose warning signal has not been made shall avoid the starting area during the starting sequence for other classes [DP].
- 12.4 A boat not started within 5 minutes of her starting signal will be scored "Did Not Start" without a hearing. This changes RRS rules A4 and A5.
- 12.5 OCS infringements may be broadcast via the VHF Channel indicated above, failure to broadcast OCS infringements shall not be grounds for redress.

**13 Recalls**

General recalls will be signalled in accordance with rule 29.2 except that the warning signal for a new start for the 1<sup>st</sup> recalled class shall be made with or after the starting signal for the last scheduled class. The new warning signal for a new start for a 2<sup>nd</sup> recalled class will be made with or after the starting signal for the 1<sup>st</sup> recalled class and so on. (i.e. "go to the back of the queue"). This changes RRS Rule 29.2. If the last class in a starting sequence is recalled, then RRS rule 29.2 will apply as normal.

**14 The Finish**

The finishing line for each course is shown in the appropriate Appendix to these Sailing Instructions.

**15 Penalty System**

The Exoneration Penalty and the Advisory Hearing and RYA Arbitration of the RYA Rules Disputes Procedures may be available.

**16 Target Times and Time Limits**

The target time for Windward/Leeward, Olympic triangular and Trapezoid courses is one hour. The time limit for each of these races is 1½ hours. The target time for passage races is two hours. The time limit for passage races is 2½ hours. If one boat in a class finishes within the time limit, then the time limit for other boats in the class will be extended by 30 minutes. This alters RRS rule 35.

**17 Protests**

- 17.1 Protest forms are available at the race office. Protests and requests for redress or reopening shall be delivered to the race office within the protest time limit, which is 1 hour after the committee boat docks. The protest time limit shall be displayed at the race office.
- 17.2 Notices will be posted no later than 30 minutes after the protest time limit to inform competitors of hearings in which they are parties or named as witnesses. On the last day of the regatta, a request for reopening a hearing shall be delivered no later than 30 minutes after the party requesting reopening was informed of the decision. This changes rule RRS rule 66.

**18 Scoring System**

- 18.1 Passage races marked "optional" are stand-alone races and do not contribute to the Series results.
- 18.2 The Saturday and Sunday races contribute towards the ECSF Series results for each class.
- 18.3 The Kelpie Cup will be awarded on the combined result of the Sunday passage races for Classes 5

& 6. These races also contribute towards the series results for Classes 5 & 6.

- 18.4 The Low Points system of RRS Appendix A (rule A4) will apply.
- 18.5 Two races are required to be completed to constitute a series.
- 18.6 When fewer than 4 races have been completed, a boat's series score will be the total of her race scores. When 4 or more races have been completed, a boat's series score will be the total of her race scores excluding her worst score. This alters RRS rule A2.

## 19 Retirals

- 19.1 Boats retiring MUST communicate this to the Race Officer as soon as possible [DP].

## 20 Restricted Area

**Boats must not pass between Leith Approach Buoy (Fl.R.3s), at 55° 59'950N, 3° 11'510W, and the entrance to Leith Harbour or enter the dredged channel between the Leith Approach Buoy and the entrance to Leith Harbour. Any boats doing so shall be subject to protest by the Race Committee [DP].**

## 21 Prizes

Prizes will be awarded to the first placed boat in each race and in the first three places in each class in the Regatta.

## 22 Safety and Risk statement

- 22.1 All boats shall comply with FYCA Safety Regulations Category 4R. Full copies of these regulations are available online at [www.fyca.org.uk](http://www.fyca.org.uk). Competing yachts may be inspected at any time.
- 22.2 Attention is drawn to Rules 1.1, 1.2, and 4 of the Racing Rules of Sailing. Rule 4 states: "The responsibility for a boat's decision to participate in a race or to continue racing is hers alone."

Sailing is by its nature an unpredictable sport and therefore inherently involves an element of risk. By taking part in the event, each competitor agrees and acknowledges that:

- (a) They are aware of the inherent element of risk involved in the sport and accept responsibility for the exposure of themselves, their crew, and their boat to such inherent risk whilst taking part in the event;
- (b) They are responsible for the safety of themselves, their crew, their boat, and their other property whether afloat or ashore;
- (c) They accept responsibility for any injury, damage or loss to the extent caused by their own actions or omissions;
- (d) Their boat is in good order, equipped to sail in the event and they are fit to participate;
- (e) The provision of a race management team, patrol boats and other officials and volunteers by the event organiser does not relieve them of their own responsibilities.
- (f) The provision of patrol boat cover is limited to such assistance, particularly in extreme weather conditions, as can be practically provided in the circumstances.
- (g) It is their responsibility to familiarise themselves with any risks specific to this venue or this event drawn to their attention in any rules and information produced for the venue or event and to attend any safety briefing held for the event.

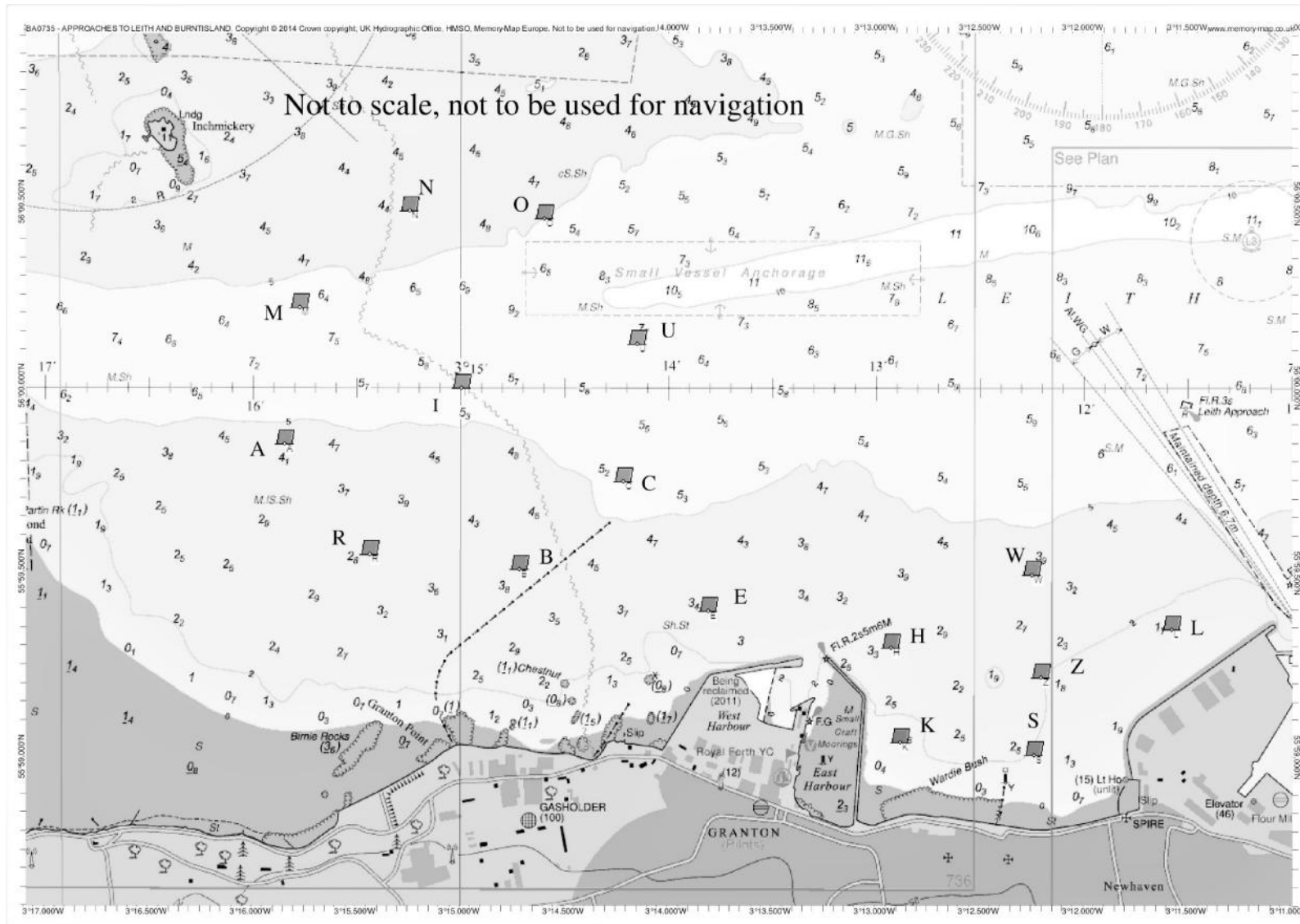
## 23 Insurance

Each participating boat shall be insured with valid third-party liability insurance with a minimum cover of £3,000,000.

**24 Tide times (BST)**

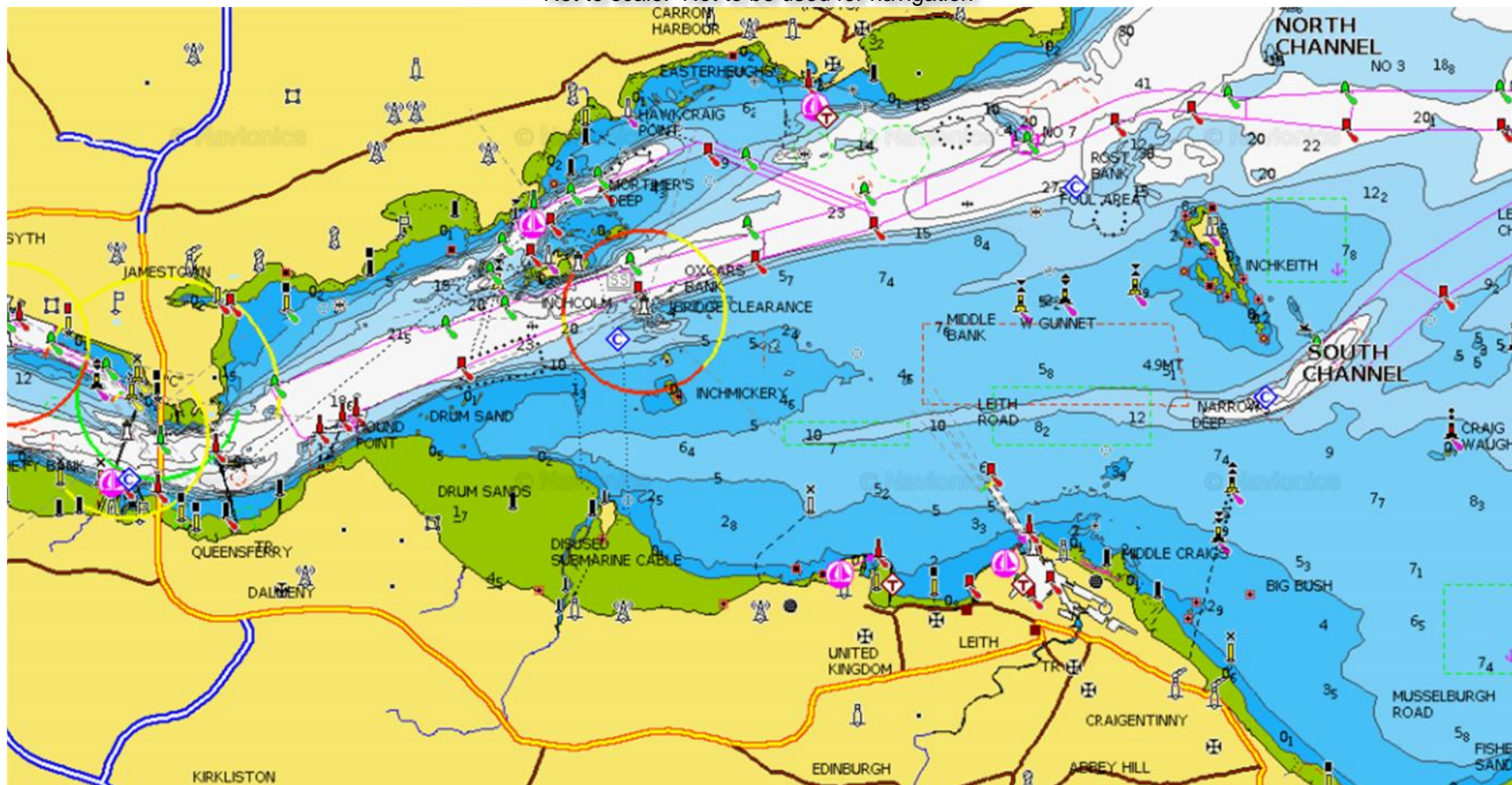
		<b>BST</b>	<b>Height</b>
Friday 1 <sup>st</sup> September	LW	0543	2.2m
	HW	1150	4.3m
	LW	1804	2.2m
Saturday 2 <sup>nd</sup> September	HW	0011	4.5m
	LW	0646	2.0m
	HW	1303	4.5m
	LW	1857	2.0m
Sunday 3 <sup>rd</sup> September	HW	0118	4.7m
	LW	0732	1.7m
	HW	1358	4.8m
	LW	1940	1.7m
Monday 4 <sup>th</sup> September	HW	0209	5.0m
	LW	0812	1.4m
	HW	1439	5.1m
	LW	2018	1.4m

### SI Appendix A – Racing Area



### ECSF 2017 Outer Racing Area

Not to scale. Not to be used for navigation





**A3. Racing Mark Definitions**

<b>ID</b>	<b>Title</b>	<b>Lat./Long.</b>	<b>Description</b>
A	RFYC Racing Mark "A"	55° 59'850N, 3° 15'850W	Black Pillar Buoy
BL	BSC Racing Mark "L"	56° 03'326N, 3° 13'505W	Orange Buoy
BX	BSC Racing Mark "X"	56° 03'130N, 3° 13'960W	Orange Buoy
CH10	Channel Buoy 10	56° 02'060N, 3° 13'293W	Port Hand Navigation Buoy
CH12	Channel Buoy 12	56° 01'775N, 3° 15'113W	Port Hand Navigation Buoy
CH15	Channel Buoy 15	56° 01'430N, 3° 18'680W	Stbd Hand Navigation Buoy
CH16	Channel buoy 16	56° 00'870N, 3° 19'600W	Port Hand Navigation Buoy
CH17	Channel Buoy 17	56° 01'230N, 3° 19'760W	Stbd Hand Navigation Buoy
CH19	Channel Buoy 19	56° 00'700N, 3° 22'400W	Stbd Hand Navigation Buoy
CH7	Channel Buoy 7	56° 02'800N, 3° 10'950W	Stbd Hand Navigation Buoy
CH9	Channel Buoy 9	56° 02'370N, 3° 13'350W	Stbd Hand Navigation Buoy
E	RFYC Racing Mark "E"	55° 59'400N, 3° 13'810W	Black Pillar Buoy
EG	East Gunnet	56° 01'420N, 3° 10'360W	East Cardinal Buoy
H	RFYC Racing Mark "H"	55° 59'300N, 3° 12'930W	Black Pillar Buoy
I	RFYC Racing Mark "I"	56° 00'000N, 3° 15'000W	Black Pillar Buoy
K	RFYC Racing Mark "K"	55° 59'045N, 3° 12'883W	Black Pillar Buoy
L	RFYC Racing Mark "L"	55° 59'350N, 3° 11'580W	Black Pillar Buoy
M	RFYC Racing Mark "M"	56° 00'220N, 3° 15'780W	Black Pillar Buoy
MD1	Mortimer Deep Mark 1	56° 02'660N, 3° 15'251W	Stbd Hand Navigation Buoy
MD2	Mortimer Deep Mark 2	56° 02'700N, 3° 15'750W	Port Hand Navigation Buoy
MD8	Mortimer Deep Mark 8	56° 02'170N, 3° 18'170W	Port Hand Navigation Buoy
N	RFYC Racing Mark "N"	56° 00'480N, 3° 15'250W	Black Pillar Buoy
P	Pallas	56° 01'500N, 3° 09'300W	West Cardinal Buoy
PW	PEYC Racing Mark "W"	55° 59'950N, 3° 24'550W	Red Buoy
R	RFYC Racing Mark "R"	55° 59'550N, 3° 15'440W	Black Pillar Buoy
S	RFYC Racing Mark "S"	55° 59'010N, 3° 12'240W	Black Pillar Buoy
U	RFYC Racing Mark "U"	56° 00'120N, 3° 14'150W	Black Pillar Buoy
W	RFYC Racing Mark "W"	55° 59'497N, 3° 12'252W	Black Pillar Buoy
WG	West Gunnet	56° 01'350N, 3° 11'054W	West Cardinal Buoy
Z	RFYC Racing Mark "Z"	55° 59'220N, 3° 12'240W	Black Pillar Buoy

## **SI Appendix B – Passage Race – Friday Feeder Race**

### **B.1 Starting Line**

The Starting Line is the Transit Line from the Port Edgar Yacht Club (PEYC) Race Box flagstaff through the transit pole, with red & green LED lighting. The outer distance limit for yachts is the transit line defined by the Yellow Buoys at the SW & SE corners of the Central Tower Exclusion Zone of the Queensferry Crossing.

### **B.2 Marks**

The marks to be used will be a combination of the RFYC race marks, PEYC race marks and navigation buoys in the Forth racing area. See SI Appendix A.

### **B.3 Course**

The course will be: Start – ch16 – H – S – L – Finish.

Marks shown in upper case should be left to Port. Marks shown in lower case should be left to Starboard

### **B.4 The Start**

There will be a single start for all classes. Numeral Pennant 1 will be the class flag.

### **B.5 Finishing Line**

The finish line will be between the main mast of the committee boat flying a blue flag and RFYC race mark "H" in Wardie Bay.

## **SI Appendix C – Saturday Burntisland Passage Race and Return Race**

### **Navigation Warning**

**Attention is drawn to the “Kirkbush” Rock at position 56° 03’248N, 3° 13’633W, approximately 250m. east of the Burntisland Sailing Club Start/Finish line and should be carefully avoided when approaching from, or departing to, the east.**

### **C.1 Burntisland Passage Race**

#### **C.1.1 Starting Line**

The starting line will be between the main mast of the committee boat displaying an orange flag and RFYC race mark “H” in Wardie Bay.

#### **C.1.2 Marks**

The marks to be used will be a combination of the RFYC race marks, Burntisland Sailing Club (BSC) race marks and navigation buoys in the Forth racing area. See SI Appendix A.

#### **C.1.3 Course**

The course options will be:

Option A: Start – e – P – ch10 – BL – Finish. (8.8nm)

Option B: Start – P – ch12 – md1 – Finish. (8.5nm)

Marks shown in upper case should be left to Port. Marks shown in lower case should be left to Starboard. The race committee will display the course letter prior to the warning signal.

#### **C.1.4 Finishing Line**

The finishing line will be a line drawn between a red outer distance mark BX (BSC Mark X) and the flagpole situated on the bridge of the BSC clubhouse. There may be an inner distance mark laid for the race.

#### **C.1.5 Shortening Course**

The race may be shortened at any mark of the course by a committee boat flying the “S” flag in accordance with RRS Rule 32.2

### **C.2 Burntisland Return Passage Race**

#### **C.2.1 Starting Line**

The starting line will be a line drawn between a red outer distance mark BX (BSC Mark X) and the flagpole situated on the bridge of the BSC clubhouse. There may be an inner distance mark laid for the race.

#### **C.2.2 Marks**

The marks to be used will be a combination of the RFYC race marks, BSC race marks and navigation buoys in the Forth racing area. See SI Appendix A.

#### **C.2.3 Course**

The course options will be:

Option A: Start – MD1 – eg – I (lima) – Finish. (7.4nm)

Option B: Start – bl – ch7 – eg – E – Finish. (7.7nm)

Marks shown in upper case should be left to Port. Marks shown in lower case should be left to Starboard

#### **C.2.4 Finishing Line**

The finishing line will be between the main mast of the committee boat flying a blue flag and RFYC race mark “H” in Wardie Bay.

#### **C.2.5 Shortening Course**

The race may be shortened at any mark of the course by a committee boat flying the “S” flag in accordance with RRS Rule 32.2.

**Appendix D – Round the Cans Races - Fixed RFYC Racing Marks**

**D.1 Marks**

The marks of the course will be selected from the RFYC “Circle” Black Pillar buoys north-west of Granton Harbour, (charted approximately in Appendix A), and a Yellow inflatable buoy, which will be designated Mark “X”. The RFYC Circle is approx. 1nm in diameter, centred approx. at mark I (INDIA).

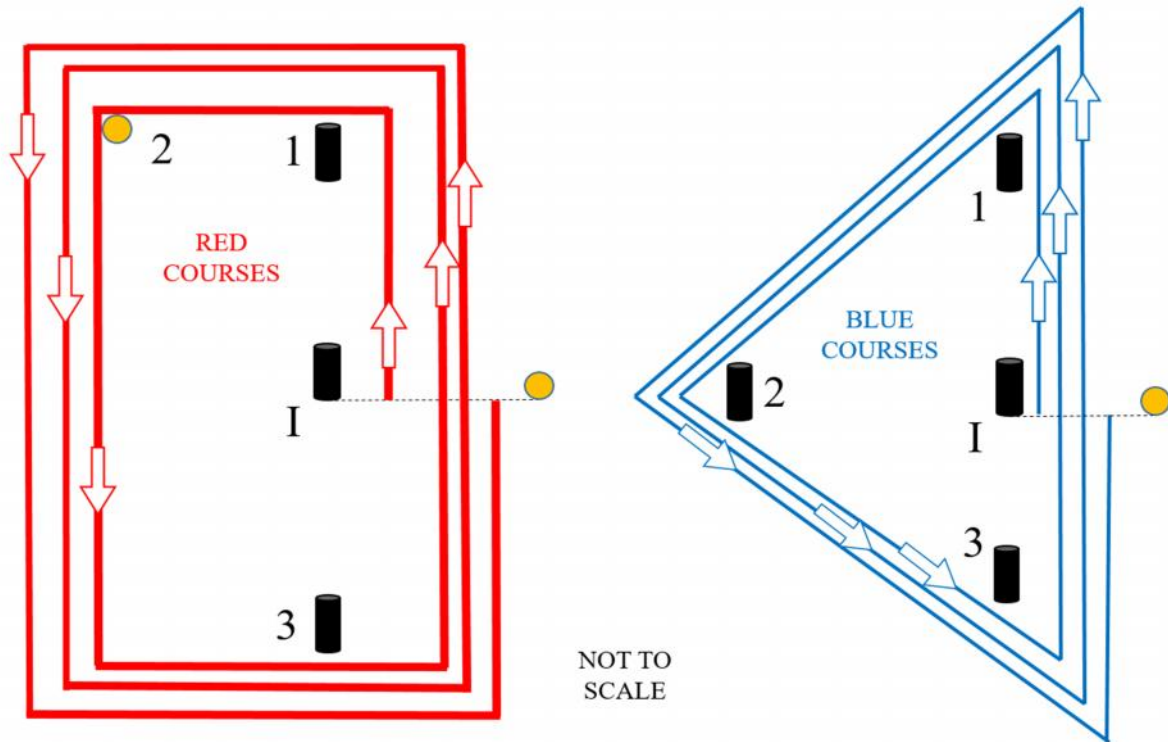
**D.2 Starting Line and Finishing Line**

The start and finish line will be between a Yellow inflatable buoy and mark I (INDIA). The committee boat will be on station on an extension of this line, but may not be at anchor. Boats shall not pass between the adjacent start mark and the committee boat [DP].

**D.3 Courses – Windward/Leeward and Olympic Style Triangle**

In the windows of the committee boat, boards will show the type of course (Red or Blue) and the number of rounds to be sailed. Course boards attached to the guard rails of the committee boat will show the letters corresponding to the racing marks to be used.

Courses (as indicated in the diagrams below): Start, 1, 2, 3, I (INDIA), 1, 2, 3, etc until Finish. Marks 1,2 and 3 are to be left to port. Boats shall pass through the start/finish line “gate” on upwind legs (i.e. when sailing from mark 3 to mark 1), and shall NOT pass through it on downwind legs. (i.e. when sailing from mark 2 to mark 3).



**D.3.1 Red Course – WINDWARD / LEEWARD**

Order of rounding	Description	Mark
1	Windward	As displayed on committee boat
2	Spreader	Mark X (Yellow buoy approx. 100 metres from Mark 1).
3	Leeward	As displayed on committee boat

**D.3.2 Blue Course – OLYMPIC STYLE TRIANGLE**

Order of rounding	Description	Mark
1	Windward	As displayed on committee boat
2	Gybe	As displayed on committee boat
3	Leeward	As displayed on committee boat

## **SI Appendix E – Round the Cans Races – Inflatable Marks**

### **E.1 Marks**

Marks 1, 2, 3s, 3p, 4s, 4p will be yellow inflatable buoys. Marks 1 and 2 shall be passed to port. Marks 3 and 4 are leeward gate marks, defined by a port and starboard buoy, approximately seven boat lengths apart. On the leeward leg, boats shall pass through the gate, but then may round either buoy when returning to the next windward leg. A leeward gate may be replaced by a single mark to be passed to port.

### **E.2 Starting Line and Finishing Line**

The start line will be between a blue inflatable buoy and the committee boat. There may be a blue inner mark to the line. Boats shall not pass between the inner mark and the committee boat [DP].

The finish line will be between marks 3s and 3p

### **E.3 Course**

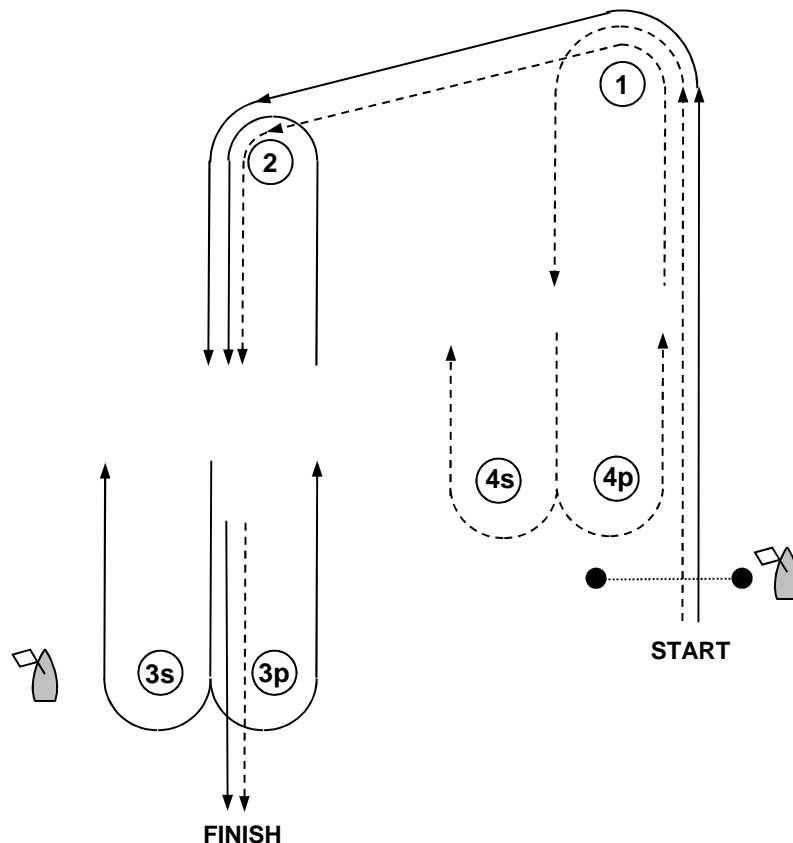
Course E2: Classes 1 and 2 (outer loop): **Start, 1, 2, (3s-3p), 2, Finish.**

Classes 3 and 4 (inner loop): **Start, 1, (4s-4p), 1, 2, Finish.**

Course E3: Classes 1 and 2 (outer loop): **Start, 1, 2, (3s-3p), 2, (3s-3p), 2, Finish.**

Classes 3 and 4 (inner loop): **Start, 1, (4s-4p), 1, (4s-4p), 1, 2, Finish.**

The race committee will display the course letter/number prior to the warning signal.



## **SI Appendix F – Sunday Passage Races– (including the Kelpie Cup) – Classes 5 & 6**

### **F.1 Starting Line**

The starting line will be between the main mast of the committee boat displaying an orange flag and RFYC “Z”.

### **F.2 Marks**

The marks to be used will be a combination of RFYC race marks and navigation buoys in the Forth racing area. See SI Appendix A.

### **F.3 The Courses**

Classes 5 and 6:

Course FA: Start – h – P – CH10 – wg – l (lima) – Finish. (9.6nm)

Course FB: Start – L – wg – p – E – w – H – Finish. (8.8nm)

Course FC: Start – e – W – wg – p – l (lima) – Finish. (7.7nm)

Course FD: Start – L – P – E – Finish. (7.5nm)

Marks shown in upper case should be left to Port. Marks shown in lower case should be left to Starboard.

### **F.4 Finishing Line**

The finishing line will be between the main mast of the committee boat displaying a blue flag and RFYC “Z”.

## **SI Appendix G – Passage Race – Sunday Port Edgar Race**

### **G.1 Starting Line**

The starting line will be between the main mast of the committee boat displaying an orange flag and RFYC race mark "H" in Wardie Bay.

### **G.2 Marks**

The marks to be used will be a combination of the RFYC race marks, PEYC race marks and navigation buoys in the Forth racing area. See SI Appendix A.

### **G.3 Course**

The course will be: Start – CH16 – pw – ch19 – pw – Finish.

Marks shown in upper case should be left to Port. Marks shown in lower case should be left to Starboard

### **G.4 The Start**

There will be a single start for all classes. Numeral Pennant 1 will be the class flag.

### **G.5 Finishing Line**

The Finishing Line is the line between the PEYC Race Box flagstaff and mark PW (PEYC Mark W).