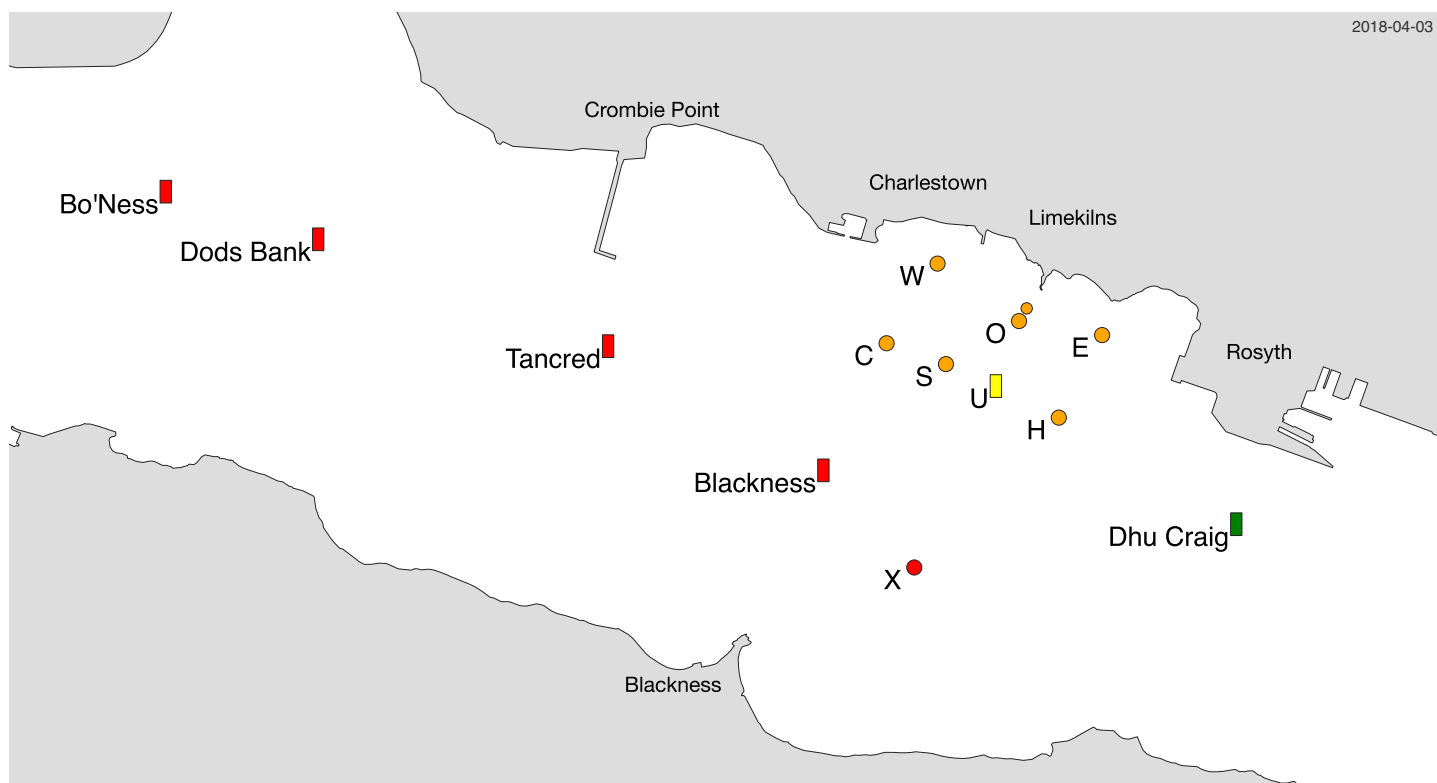


Forth Cruising Club – 2018 Race Courses



West Courses

- W1 Tancred - H - E - O - C - H - O - W - H - E - O
- W2 C - E - C - U - E - O - C - E - C - O
- W3 C - H - E - O - C - H - O - W - H - O
- W4 C - W - H - O - C - E - O - H - E - O
- W5 C - Blackness - E - O - C - H - E - O - W - H - O
- W6 C - H - O - C - H - O - W - H - E - O
- W7 W - H - E - O - W - H - O - W - H - E - O
- W8 W - Bo'Ness - Blackness - H - E - O
- W9 W - Dods Bank - Blackness - H - E - O
- W10 S - C - O - C - O
- W11 C - Blackness - X - O - U - O - C - Blackness - X - O
- W12 C - X - W - S - O - W - S - O - C - X - S - O
- W13 S - Blackness - S - Blackness - O - S - Blackness - O
- W14 W - S - W - S - O - W - S - O

East Courses

- E1 E - H - W - O - E - W - O - E - H - W - O
- E2 E - H - W - O - Blackness - O - E - H - W - O
- E3 Dhu Craig - Tancred - O - E - H - W - O
- E4 E - Blackness - W - O - E - H - W - O - E - H - W - O
- E5 E - Blackness - E - O - S - E - O - S - E - O
- E6 E - C - H - W - O - E - C - H - W - O - H - W - O
- E7 E - C - O - E - H - O - E - H - W - O
- E8 E - H - Blackness - Bo'Ness - W - O
- E9 E - H - Blackness - Dods Bank - W - O

Courses will be displayed with a letter and a number in the FCC starter's hut window. The starting line is between the mast in front of the starter's hut and the outer distance mark O and is limited by inner distance mark N. Boats must start and finish between the outer distance mark O and the inner distance mark N.

Direction of rounding: leave marks in **RED** to port, in **GREEN** to starboard

Name	Description	Location	Name	Description	Location
Blackness	Port Channel Mark	56° 01.064'N 3° 30.314'W	N	Start Inner	56° 01.737'N 3° 28.844'W
Bo'Ness	Port Channel Mark	56° 02.222'N 3° 35.205'W	O	Start Outer	56° 01.684'N 3° 28.901'W
C	Orange FCC Buoy	56° 01.592'N 3° 29.886'W	S	Orange FCC Buoy (new 2018)	56° 01.505'N 3° 29.444'W
Dhu Craig	Starboard Channel Mark	56° 00.840'N 3° 27.243'W	Tancred	Port Channel Mark	56° 01.580'N 3° 31.915'W
Dods Bank	Port Channel Mark	56° 02.024'N 3° 34.071'W	U	Yellow Sewage Outfall Mark	56° 01.414'N 3° 29.031'W
E	Orange FCC Buoy	56° 01.626'N 3° 28.283'W	W	Orange FCC Buoy	56° 01.923'N 3° 29.507'W
H	Orange FCC Buoy	56° 01.283'N 3° 28.605'W	X	Red PEYC Buoy	56° 00.660'N 3° 29.680'W