

SI Appendix A – Courses for Fleet 1

A.1 Starting Line

The starting line will be between two orange inflatable buoys. A committee boat flying an Orange flag will be on station on an extension of this line, but may not be at anchor.

A.2 Marks

The marks of the course will be yellow inflatable buoys.

A.3 Finishing Line

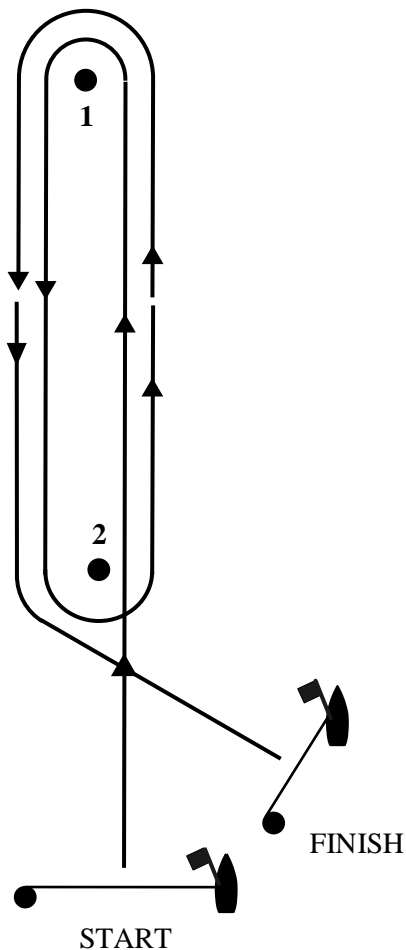
The finishing line will be between two yellow inflatable buoys. A committee boat flying a blue flag will be on station on the extension of this line, but may not be at anchor.

A.4 Courses

The course boards in the window of the committee boat will show the type of course (Blue, Red or White).

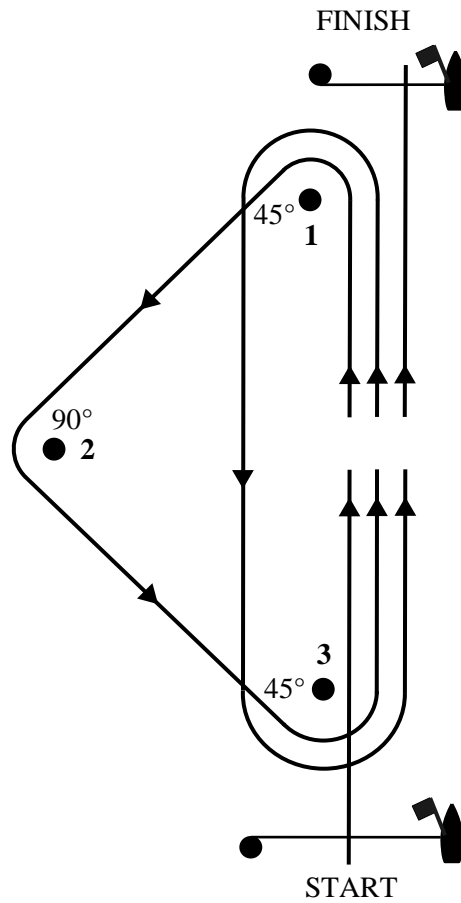
BLUE course – Windward / Leeward

Course : Start – 1 – 2 – 1 – 2 – Finish. Marks 1 and 2 to be left to port.



Red Course – Triangle / Sausage

Course: Start – 1 – 2 – 3 – 1 – 3 – Finish. Marks 1, 2 and 3 to be left to port.



White Course – Trapezoid

Course: Start – 1 – 2 – 3 – 2 – 3 – Finish. Marks 1, 2 and 3 to be left to port.

