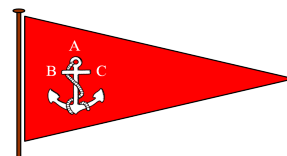


**144<sup>th</sup> ABERDOUR REGATTA**  
**SAILING INSTRUCTIONS**  
**SATURDAY 13<sup>th</sup> JULY 2019, ABERDOUR**



Aberdour Boat Club is the Organising Authority of the 144<sup>th</sup> Aberdour Regatta, which is a FYCA Yacht Championship qualifying event.

## 1. RULES

- 1.1. The racing shall be governed by the current ISAF Racing Rules of Sailing as amended here below; subject to the International Regulations for the Prevention of Collision at Sea and the Forth Bylaws, general directions and current Notices to Mariners as published by Forth Ports Ltd. Also competitors must comply with the FYCA Safety Regulations appropriate to a Category 4R event. These documents are available for inspection on the websites of the referenced bodies.
- 1.2. Any boat sailing in the vicinity of the Regatta start shall be understood to have agreed to these conditions.

## 2. CHANGES TO SAILING INSTRUCTIONS

- 2.1. Any late changes to these Instructions will be advised by signaling flag L on the pierhead flagpole prior to the first start and posting a written notice on the notice board on the Aberdour clubhouse workshop door. Skippers unable to make Aberdour harbor can contact the race officer by VHF channel 77 or 07900084483.

## 3. SCHEDULE OF RACES

- 3.1. Races shall be run for the following handicap classes. The scheduled time of the class warning flags are as given below. A Pier end briefing will be held for all skippers at 10.30h if they are able to attend.

Class	Handicap	Flag	Warning
Fast Handicap	FYCA 1066 and below	F	11.00
Slow Handicap	FYCA above 1066	E	11.15

- 3.2. All yachts entering shall have FYCA PY handicaps, or must accept a trial handicap allocated by the Regatta Committee. Handicaps allocated by the FYCA will be used, see: <http://fyca.org.uk/Data/Handicaps/2019Handicaps/index.php>. Fast and Slow cruiser racers may fly any standard sailing rig.

## 4. ENTRY

- 4.1. Any owner or skipper wishing to participate must enter by signing a completed Entry Form (attached) and sending it to the Race Officer's clerk at Aberdour together with a fee of £10 before 10.45h on 13<sup>th</sup> July. Early entry will be appreciated by the committee. Entry forms will be accepted in the clubhouse on Friday 12<sup>th</sup> July from 1800 till 2000.
- 4.2. The Regatta Committee may refuse entry to any yacht and shall give the reason.

## **5. RESTRICTED SAIL OPTION.**

- 5.1. Yachts may request to use a restricted set of sails (RS - defined as no spinnaker or cruising chute, and no additional headsails than used to windward to be set at any time). This provision, made under FYCA guidance, is intended for yachts not equipped with a spinnaker, and for crews considered by the Race Committee to be 'less experienced', 'less capable' or 'short-handed', the latter defined as 60% or less of the yacht's full crew except that 2 crew are permitted on 3 crew rated designs. The RS provision will not be granted if, due to the course or weather conditions, no yachts are able to fly spinnakers.
- 5.2. To request the RS provision, a yacht must contact the Race Committee on VHF channel 77, on race day at least 15 minutes before its class warning signal is displayed. To be valid, the Race Committee must have confirmed their agreement before its class warning signal. It is at the absolute discretion of the Race Committee whether to accept an RS request or not on any particular day.
- 5.3. A yacht permitted to use the RS provision shall display a white pennant or flag on the backstay or other prominent position, from its class warning signal until it finishes.
- 5.4. A yacht permitted to use the RS provision shall receive a +4% handicap adjustment. All results, both in full and RS configuration, shall be considered in calculating overall series positions.
- 5.5. If fewer than 4 entries are received for any class the Race Officer may eliminate or combine classes or boats to ensure enjoyable racing.

## **6. RACING AREAS AND COURSES**

- 6.1. The racing area will be in the Firth of Forth off Aberdour, as shown on Admiralty Charts 735 and 736.
- 6.2. Courses will be selected from the ABC course sheet (attached and available at <http://www.aberdourboatclub.co.uk/seaward/sal-instructions>) and typically include a circumnavigation of Inchcolm and Inchmickery.

## **7. AREAS THAT ARE OBSTRUCTIONS**

- 7.1. Boats must keep a minimum of 100 m distant from the Braefoot Bay gas terminal and 0.5 mile from any moving tanker.

## **8. MARKS**

- 8.1. Marks are Forth Navigation buoys either within the Mortimers Deep navigation channel north of Inchcolm designated such as M6, or main Forth navigation channel buoys to the south, designated such as F15.
- 8.2. In addition, the Mark C is an Aberdour Boat Club orange buoy with top flag Z in Silversands Bay about 56°3.2 N, 3°16.7 W.
- 8.3. Marks shall be taken on the hand designated by the type case of the letter shown on course chart. Port hand marks shall be shown in CAPITAL.

## **9. THE START**

- 9.1. The start and finish line will be between the flagstaff on the stone pier and an outer distance mark, which is an orange buoy with flag Z, laid approximately 200 m to the South-East.

9.2. Races will be started according to Rule 26, i.e. a sequence flag and sound signals at 5-4-1-0 minutes before the start time, as set out below.

9.3. Any yacht not yet signalled to prepare must keep clear.

9.4. There will be a pier end briefing for Skippers at 10.30h to confirm course and start times. Any boat that is unable to make this briefing can contact the race officer (channel 77) for confirmation of course and start times after 1030h.

Class	Time	Signal	Flag	Sound
Fast handicap	1100	Warning signal	↑ F raised	One
	1101	Preparatory	↑ P raised	One
	1104	One minute	↓ P lowered	One long
	1105	Start	↓ F lowered	One
Slow handicap	1115	Warning signal	↑ E raised	One
	1116	Preparatory	↑ P raised	One
	1119	One minute	↓ P lowered	One long
	1120	Start	↓ E lowered	One

## 10. TIME LIMITS

10.1 A time limit of 3 hours will apply to each class from the time of its start with the provision of an X hr extension after the first yacht has finished if necessary. X will be notified by VHF after the first yacht finishes.

## 11. RADIO COMMUNICATIONS

11.1. Any boat which retires should inform the Race Officer, by any means, as soon as possible, such as by hail, VHF Ch. 77, or phone on 07900084483.

## 12. PRIZES, SOCIAL EVENT & OVERNIGHT BERTHING

12.1. The traditional Aberdour trophies will be awarded (for one year's home retention) to winning boats in each class and mementos may be awarded to worthy participants. Prize-giving will be held in Aberdour Boat Clubhouse on day of the regatta and participants are invited to join the Club sociably in the clubhouse.

12.2. Yachts participating in the regatta are welcome to berth in Aberdour Harbour free of charge for the nights of Friday 12th July HW 11.50 BST 4.9m and Saturday 13th July HW 11.253 BST 5.0 m, (Leith). Aberdour pierhead dries 1.4 m above C.D.

12.3. There will be an after Race social in the Aberdour Boat Club which will include food and refreshments (pay bar).

## 13. INSURANCE

13.1. Each participating boat shall be insured with valid third-party liability insurance with a minimum cover of £3 million per event or the equivalent.

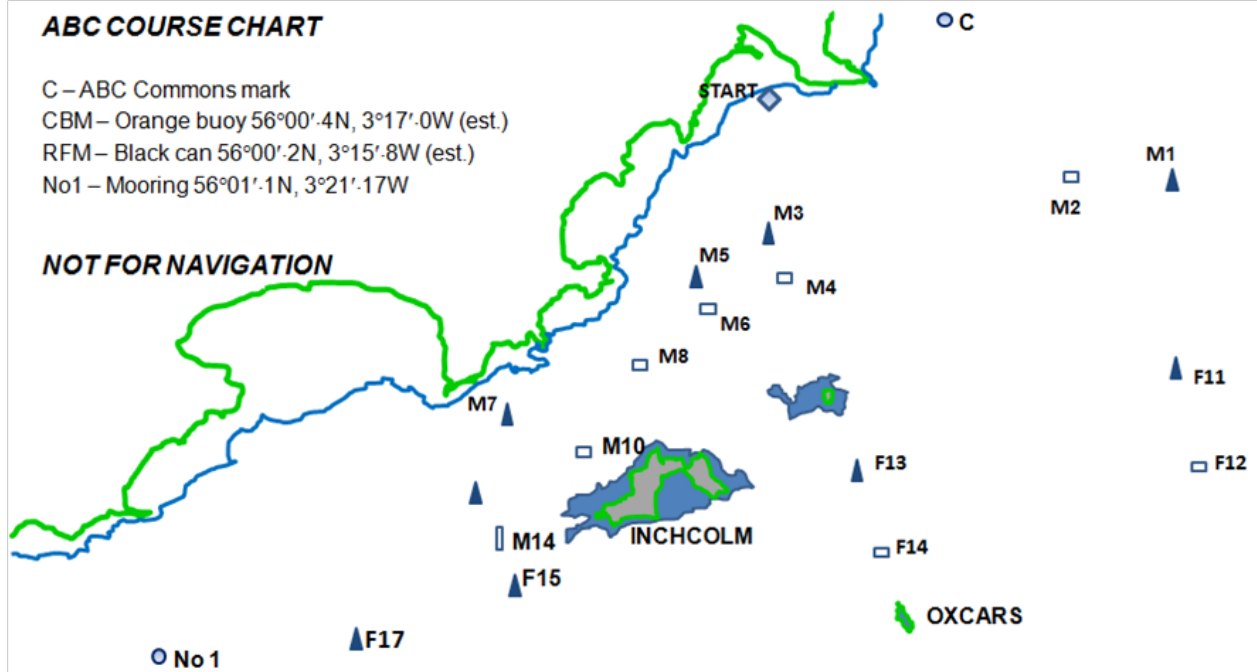
## 14. END NOTE

14.1. There are five pages to this Sailing Instruction document: three pages of SI, ABC Course chart with race mark list, and ABC Event Entry form.

### ABC COURSE CHART

C – ABC Commons mark  
 CBM – Orange buoy 56°00'.4N, 3°17'.0W (est.)  
 RFM – Black can 56°00'.2N, 3°15'.8W (est.)  
 No1 – Mooring 56°01'.1N, 3°21'.17W

**NOT FOR NAVIGATION**



Course	Brg 1st mark	PORT is CAPITAL						Distance
A	175	S	M4	M2	S			2.7
b	110	s	m4	m4	s			2.7
C	190	S	M6	M4	S	M3	S	3
d	180	s	m3	s	m4	m6	s	3
E	190	S	M6	M2	C	S		3.2
f	70	s	c	m2	m6	s		3.2
G	190	S	M6	F11	C	S		4.1
h	70	s	c	f11	m6	s		4.1
J	190	S	M6	f11	f13	C	S	5.3
k	70	s	c	F13	F11	m6	s	5.3
L	170	S	M14	F15	F11	S		5.7
m	130	s	f11	f15	m14	s		5.7
N	170	S	M14	F15	CBM	RFM	S	6.3
p	160	s	rfm	cbm	f15	m14	s	6.3
Q	230	S	No1	CBM	RFM	M1	S	9.4
r	110	s	m1	rfm	cbm	no1	s	9.4
S	220	S	M7	F13	S			3.1



## ABERDOUR BOAT CLUB – RACE ENTRY FORM

Event	Aberdour Regatta
Date	Saturday 13 <sup>th</sup> July 2019
Class	Fast/Slow Handicap
Restricted sail	Yes / No
Sail No	
Yacht Name	
Owner	
Helm (if different)	
Club	
Email	
Phone	
Boat type / Hull colour	
Handicap	
Address	

### Declaration

1. The information given above is correct and the yacht's details published in the 2013FYCA Handicap List have not changed.
2. I accept that the safety of this boat and her entire management including insurance shall be the sole responsibility of the owner/competitor racing the yacht and who must ensure that the boat and the crew are adequate to face the conditions that may arise in the course of the race. The organisation of this race in no way limits or reduces the absolute responsibility of the owner/competitor for the crew, the boat and the management thereof. The race organisers shall not be responsible for any loss, damage, death or any personal injury howsoever caused to the owner/competitor skipper or crew, as a result of their taking part in this race. Moreover, I warrant the suitability of the boat for this race.
3. There is a £10 entry fee per boat which includes food at the post race social and prize giving.

Signed (Boat owner/ representative) .....

Return this form: Andy Oldfield, Sailing Secretary, Aberdour Boat Club: [andy@verysharpart.com](mailto:andy@verysharpart.com)

Or on the day to the race officer (at least ½ hour before the start of the race)

Entry Fee £ enclosed